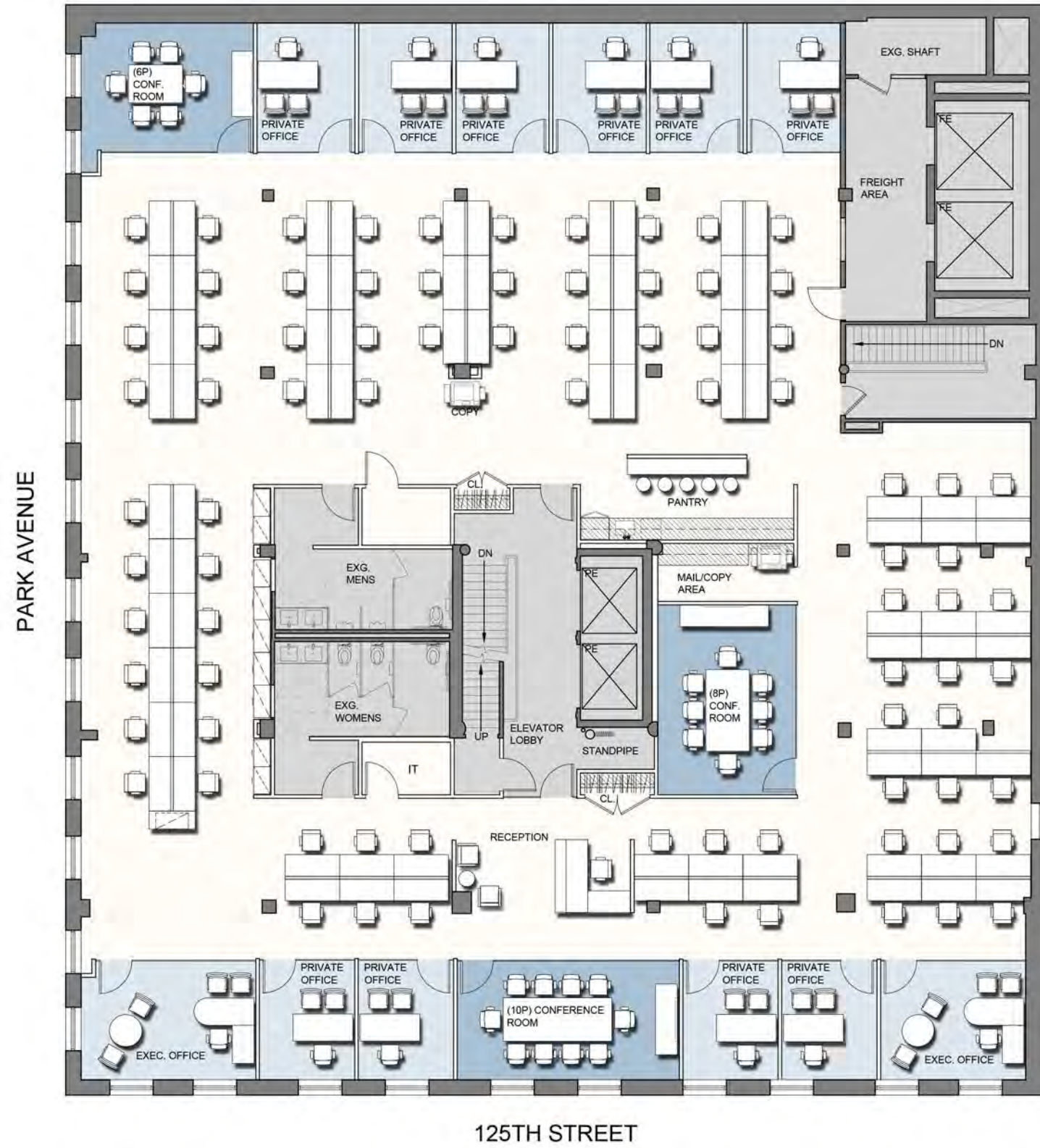




THE LEE BUILDING  
1825 PARK AVENUE



12TH FLOOR OCCUPANCY	
OFFICE TYPE	PROPOSED
EXECUTIVE OFFICES	2
PRIVATE OFFICES	10
BENCHING (24" x 60")	82
RECEPTIONIST	1
<b>TOTAL OCCUPANTS</b>	<b>95</b>
<b>SUPPORT</b>	
6P SMALL CONFERENCE ROOM	1
8P SMALL CONFERENCE ROOM	1
10P SMALL CONFERENCE ROOM	1
STORAGE (FUTURE BATHROOM)	1
CLOSET	2
IT	1
MAIL/COPY ROOM	1
PANTRY	1

<b>RENTABLE SQUARE FOOTAGE</b>
11,428 SQ. FT

125TH STREET

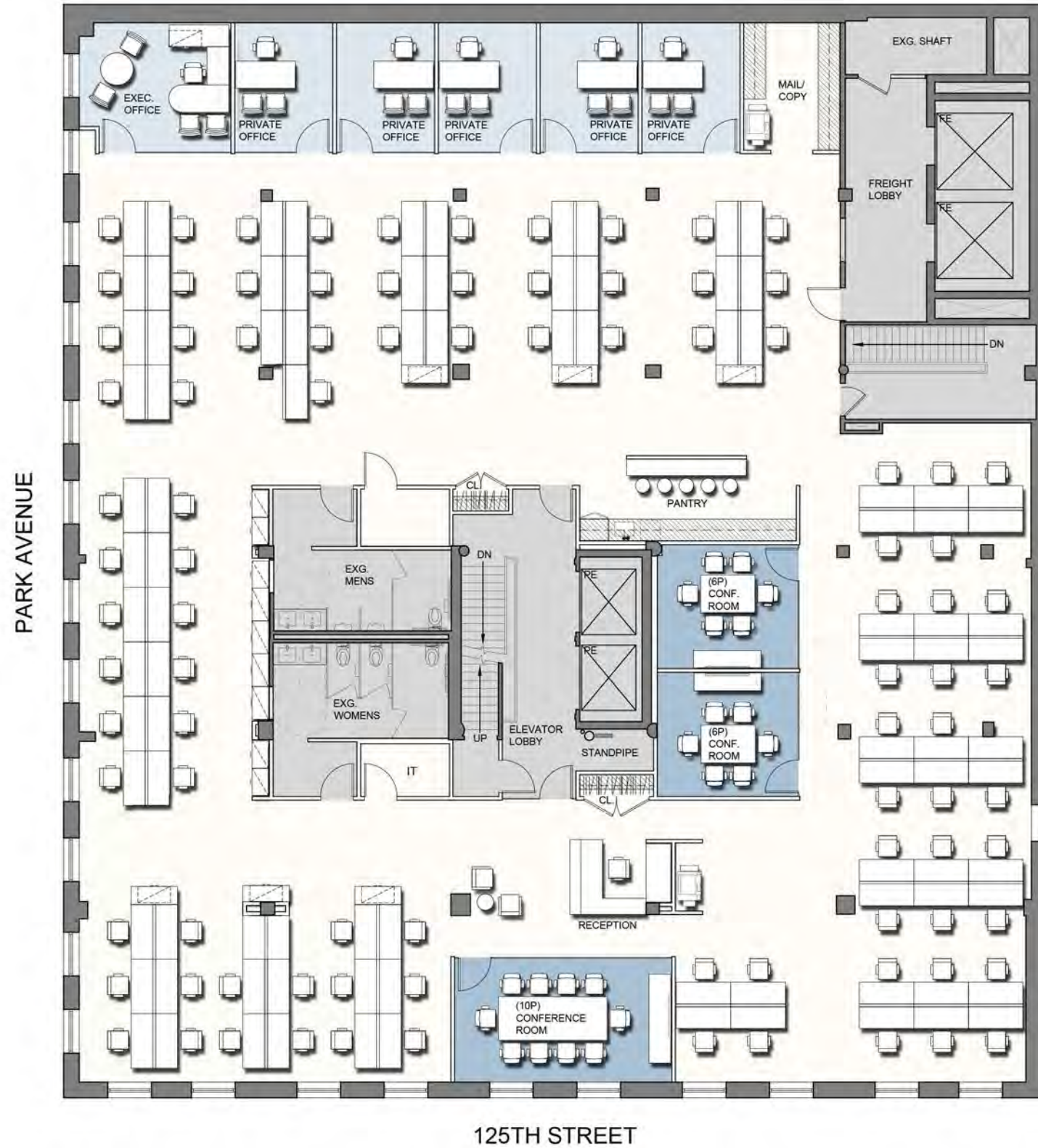
## OFFICE INTENSIVE PLAN OPTION A

02.26.2016





THE LEE BUILDING  
1825 PARK AVENUE



12TH FLOOR OCCUPANCY	
OFFICE TYPE	PROPOSED
EXECUTIVE OFFICE	1
PRIVATE OFFICES	5
BENCHING (24" x 60")	93
RECEPTIONIST	1
<b>TOTAL OCCUPANTS</b>	<b>100</b>
<b>ALLOWABLE BY 2014 PLMB. CODE</b>	<b>100</b>
<b>SUPPORT</b>	
6P SMALL CONFERENCE ROOM	2
10P SMALL CONFERENCE ROOM	1
STORAGE (FUTURE BATHROOM)	1
CLOSETS	3
IT	1
MAIL/COPY ROOM	1
PANTRY	1

<b>RENTABLE SQUARE FOOTAGE</b>
11,428 SQ. FT

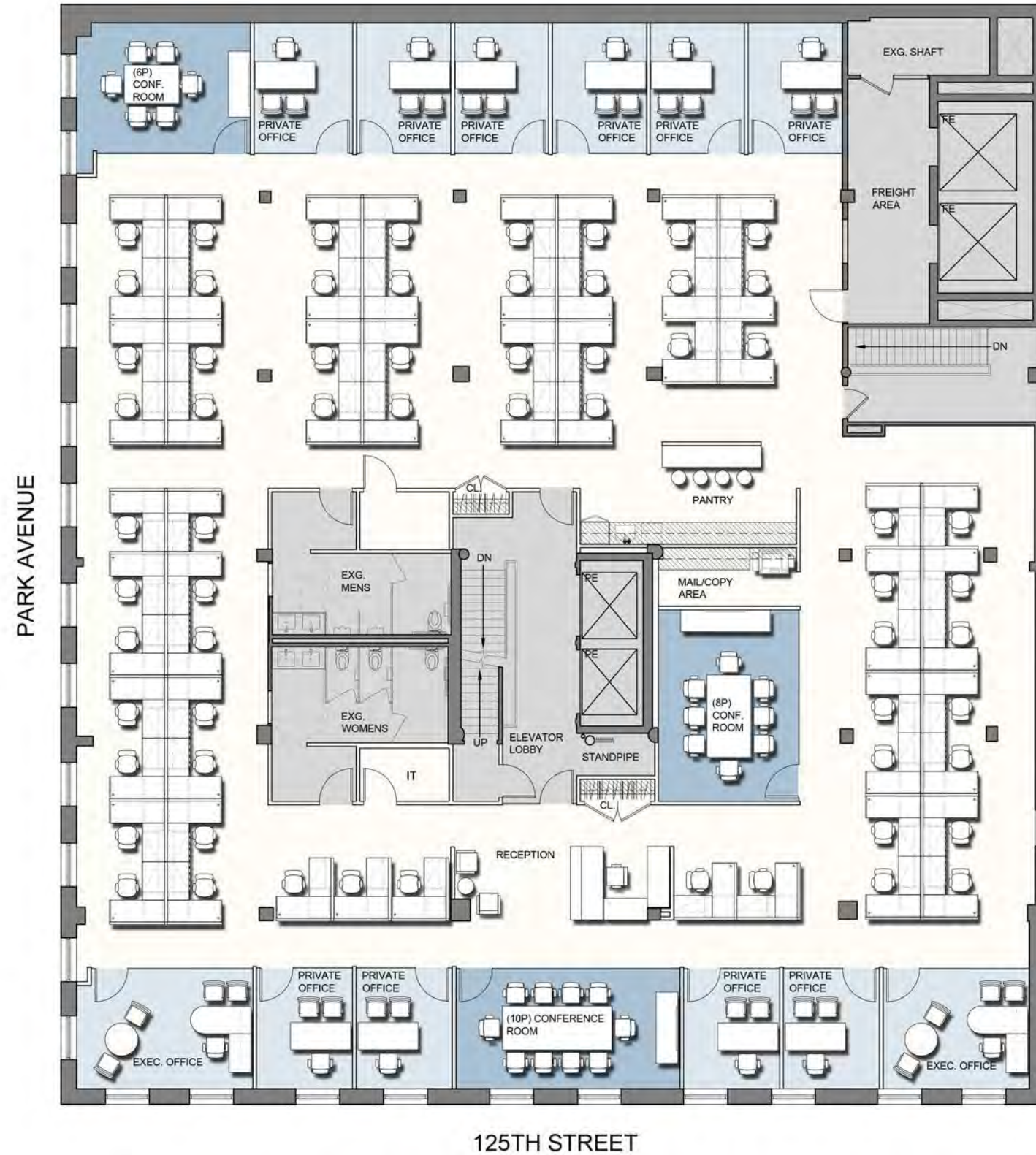
## OPEN PLAN OPTION A

02.26.2016





THE LEE BUILDING  
1825 PARK AVENUE



12TH FLOOR OCCUPANCY	
OFFICE TYPE	PROPOSED
EXECUTIVE OFFICES	2
PRIVATE OFFICES	10
WORKSTATIONS (60" x 66")	63
RECEPTIONIST	1
<b>TOTAL OCCUPANTS</b>	<b>76</b>
<b>SUPPORT</b>	
6P SMALL CONFERENCE ROOM	1
8P SMALL CONFERENCE ROOM	1
10P SMALL CONFERENCE ROOM	1
STORAGE (FUTURE BATHROOM)	1
CLOSET	3
IT	1
MAIL/COPY ROOM	1
PANTRY	1

RENTABLE SQUARE FOOTAGE
11,428 SQ. FT

125TH STREET

## OFFICE INTENSIVE PLAN OPTION B

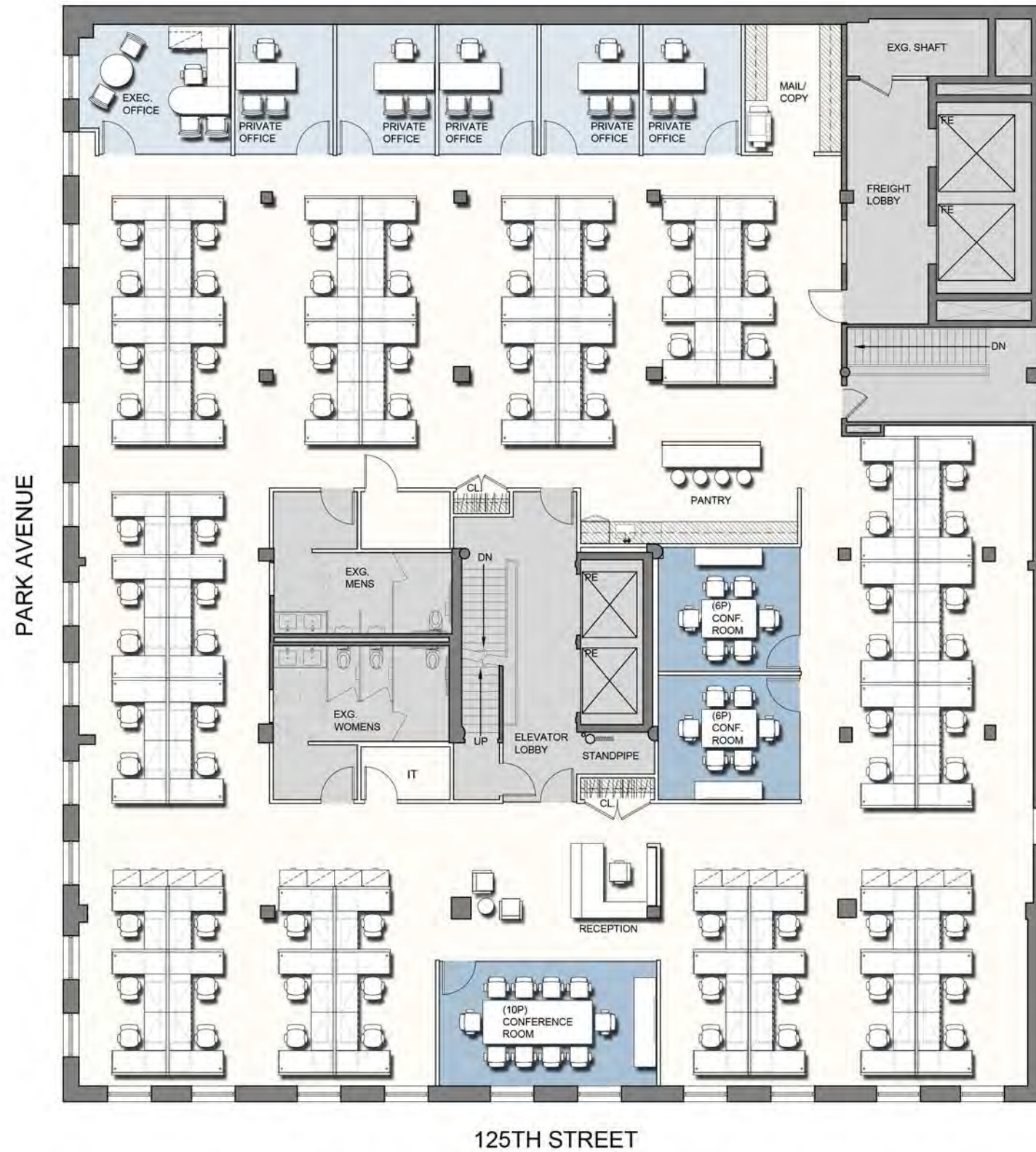
02.26.2016



**KAHN** architecture



THE LEE BUILDING  
1825 PARK AVENUE



12TH FLOOR OCCUPANCY	
OFFICE TYPE	PROPOSED
EXECUTIVE OFFICE	1
PRIVATE OFFICES	5
WORKSTATIONS (60" x 66")	76
RECEPTIONIST	1
<b>TOTAL OCCUPANTS</b>	<b>83</b>
<b>ALLOWABLE BY 2014 PLMB. CODE</b>	<b>100</b>
<b>SUPPORT</b>	
6P SMALL CONFERENCE ROOM	2
10P SMALL CONFERENCE ROOM	1
STORAGE (FUTURE BATHROOM)	1
CLOSETS	3
IT	1
MAIL/COPY ROOM	1
PANTRY	1

RENTABLE SQUARE FOOTAGE
11,428 SQ. FT

## OPEN PLAN OPTION B

02.26.2016



**KAHN** architecture